

Friends of Glenthorne Inc

NEWSLETTER 2010



INCORPORATED IN 1998

Autumn Edition

Heritage

Sense of Place

Future

FORWARD 2010

2010 has commenced with productive Working Bees, partnership formed with Friends of the Lower Field River, Messenger articles and lots of meetings and phone calls. We are excited about the range of enquiries we've had from people wanting to know "what is happening with Glenthorne?" and wishing to join.

The 2009 Christmas Celebration, with 42 attendees, was testimony to the commitment, dedication and physical work of so many members. It was a great way to acknowledge and celebrate their achievements. The goodwill which evolves from such support is a priceless commodity. Thank you to everyone who contributed through 2009.

Come along in 2010 and view the productive efforts of our volunteers, at any of our working bees. You will be made most welcome.

The State Election has presented opportunities to raise FOG's profile in having candidates state their views and ideas for the property and how FOG can best be protected in the formulation of a Management Plan for the property.

We are prepared to play our part, but expect all stakeholders to work together. We want a place at the table to dialogue with the University of Adelaide, ideas and issues on behalf of our communities and to be part of the planning process.

Here's to another exciting year.

Regards - Peter S.
Chairperson

Members of the Friends of Glenthorne Inc are continuing to be active in preserving a significant part of South Australia's heritage and environment.

Website: www.friendsofglenthorne.org.au

Points of View

Glenthorne Farm is a significant part of the journey 'going south' through to the attractions of the Fleurieu Peninsula. It is a significant landmark and has the economic potential from eco-tourism :- sustainable, low impact, recreational, heritage and cultural activities.

The development of 'significant attributes' would attract visitors, both local and overseas:

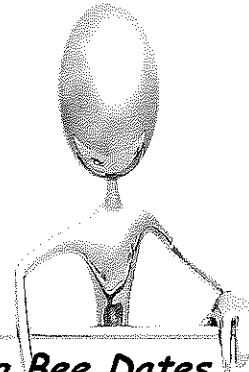
- Natural landscape & unique flora
- A sense of space and parklands
- Fauna corridors
- Closeness to Adelaide (16kms)
- Easy access

Election Matters

With State Election on the horizon, FOG Members are urged to approach candidates in their electorate to find out their position and plans for the future of Glenthorne Farm.

Discussions could centre around -

- priorities and long term plans
- inclusion in developing an overview plan
- future Integrated Management Plan
- support for Federal Grant assistance and funding
- area as a natural space for 'relief' from urban sprawl and provide recreational opportunities without having to travel vast distances.



Working Bee Dates

The working bees for 2010 are as follows, subject to possible change at late notice.

21st March	2010
18th April	2010
16th May	2010
20th June	2010
18th July	2010
15th August	2010
19th September	2010
17th October	2010
21st November	2010
TBA	December 2010

The University of Adelaide Community Engagement Officer

Of interest...

We are seeking an enthusiastic individual to provide assistance in the successful delivery of community engagement activities across the University and to maintain mutually beneficial partnerships with the community in accordance with the values expressed in the University's Strategic Plan. You should have the ability to use well developed interpersonal skills to foster and build effective stakeholder relationships and the well developed ability to communicate clearly and effectively and relate to a broad range of people in a manner that engenders confidence through telephone conversations, written correspondence and/or personal contact.

Fixed term position available from Dec. 2009 for a period of 2 years.

Salary (HEO4) \$46,868—\$51,112 per annum plus an employer superannuation contribution of 9% applies.



Extracts from *The Advertiser*

Extracts from Paul Duldig

Legacy assets for sale

..... proposed sale of a spread of historic farms and stations by the University of Adelaide raises the question of the rights of our benefactors.

....the university is selling its huge agricultural properties.....

.....the university views it as a straightforward financial transaction. Proceeds from the sales will help pay for the infrastructure for research into agriculture at Roseworthy College and Waite Institute.

.....as long as the properties were kept, there was a link between the institutions and the remarkable men who made generous bequests of their land-holdings.

.....the university makes it clear it has no legal obligations to keep the properties, but obligation has different meanings when it comes to bequests. The university accountants' version of obligation here is all about solving short term problems.

*Extract 'The Advertiser' Heritage Matters
by Tim Lloyd*

.....some argue the loss of Union Hall is a tragedy for the arts. In reality, it has not been used as a full theatre for some years.

.....the university is proposing to build a state of the art, seven level research and teaching facility on the site currently occupied by Union Hall. The proposed new facility would be the best of its kind, unrivalled anywhere in the world.

.....it is not the university's responsibility to be the state's key provider of affordable theatre space. Our main responsibility is research and teaching.

.....the university already has 41 heritage listed structures across our campuses and we are highly regarded for our work on heritage conservation.....however in the past few years we have spent more than \$4.7 million alone on conservation of just three of our heritage listed buildings and we received no ongoing funding for this. The money simply isn't there.

.....we realize that Union Hall has memories and significance for some people but we need to adopt a visionary approach. We need to use our limited space to produce far greater benefits for our students and staff—and for the state.

Field River Plan

A 33 page Lower Field River concept plan—commissioned by the Adelaide and Mt Lofty Natural Resources Management (NRM) Board—focuses on the area downstream of Glenthorne Farm, O'Halloran Hill, to the mouth of the river at Hallett Cove.

NRM projects manager Steve Gatti said the site was an 'open space opportunity that's too good to miss'. "It's such valuable land in that it's rare to have a significant open space parcel in a heavily urbanized area", he said.

Friends of Lower Field River Chairman David Greenhough said he supported the concept plan.

"This highlights the urgent need to resolve the land issues of the Lower Field River.... for the benefit of the whole community and the environment", he said

*Excerpts from Guardian Messenger 27/01/2010 by
Matt Turner*

* * * * *

Glenthorne Farm is a significant part of the whole picture. David Greenhough & David Squirrel from Friends of Lower Field River have met with Peter and Alan.

Fact File

Valley Plans

The report produced by Australian Water Environments, purposes:

- Wetlands with the potential to harvest water to supply local homes
- Open space and picnic areas all at the eastern and western ends of the Field River Valley
- A mountain bike riding area
- A network of trails including at least one multiuse trail for walkers, cyclists, horse riders and emergency vehicle access
- Signage for significant Aboriginal archaeological sites and European structures such as the State Heritage-listed Worthing Mine
- A revegetation of the area by planting local indigenous species and removing exotic trees and:
- Vegetated linkages allowing animals to move between creek line corridors from the Field River Valley to other open spaces, including Glenthorne Farm and Hallett Cove Conservation Park.

The Fight for Glenthorne

The Memorandum of Understanding signed in 1998 and the subsequent sale Deed of 2001, were written to protect Glenthorne Farm from any urban development. The terms stated in the original Deed were rightly upheld by the State Government in March 2009, after much Community outcry. The University of Adelaide had planned 950 homes in the fragile valley which runs through the property, in order to fund its Woodland Recovery Initiative. Since March 2009, although not being included in the planning for the future of the property, and not being advised of any developments by the University regarding revegetation, the Friends have continued to nurture a number of revegetation sites on the property. Since December 2009, members have also been propagating seed from the Happy Valley Reservoir and other local remnant trees and shrubs, and this year, for the first time, we expect to plant over 550 of our own plants.

The University of Adelaide is due to produce another Concept Plan for Glenthorne for State Government consideration by June this year, and it is hoped that the Friends will be included in discussions at some point in 2010. The efforts of our group over the past 14 years cannot go unrecognized any longer.

2010 Objectives

- Building network contacts and forming partnerships with other Agencies
- Participate in community activities to promote FOG
- Expand Data Base and utilize Web-site (www.friendsofglenthorne.org.au)
- Photo Gallery to record activities
- "Re-constructing" environmental issues associated with development of Glenthorne Farm for community consumption by:-
 - Information transfer
 - Communication
 - Awareness Raising
 - Fostering debate
 - Developing a point of view

If you would like further information,
contact -
FRIENDS OF GLENTHORNE INC.
Chairperson
Peter Smytherman
Tel. 8537 0506
Lot 1 Thomas Rd
CLAYTON BAY 5256
commonfrog@harboursat.com.au

Secretary/Treasurer
Alan Burns
Tel. 83405509 (w)
22 Westall Way
SHEIDOW PARK 5158
caburns1@bigpond.com



Working Bee Functions

- Control weeds and assist in revegetation efforts.
- To support each others as local volunteers.
- To know the features of the property and identify its vegetation types.
- Bird identification, seed collection and heritage protection.